

# Alaska Department of Fish and Game

Habitat Section  
Southeast Region



**112-42-10160-2021**

**ADDITION and CORRECTION**

**Water body name:**

**Survey date:** 8/17/2022

**Quad:** Sitka C-4

**Species & Lifestage:** COp, DVp

**Upper Reach Latitude:** 57.686333 **Longitude:** -135.052668

**Survey crew:** RR, DK

**Lower Reach Latitude:** 57.697684 **Longitude:** -135.074776

**Findings:** We surveyed this cataloged stream using a backpack electrofisher and GPS and captured juvenile coho salmon, Dolly Varden, and cutthroat trout (Figure 1). The stream is forested, low gradient, and flows from the lake where we ended our survey (Table 1; Figures 2,3). We concluded our survey due to a lack of time; anadromous fish habitat potentially continues upstream of final survey point. We also surveyed other reaches this stream and found it incorrectly mapped in the catalog.

**Recommendations:** Extend upper extent of Stream No. 112-42-10160-2021 in the anadromous waters catalog for rearing coho salmon (Figure 4). Correct the route of this stream to match the field verified path drawn from a combination of survey points, USFS data and imagery.

**Nomination:** Pending

Table 1.—112-42-10160-2021 survey data.

Waypoint	Latitude	Longitude	Notes	Stream Width ft	Stream Substrate	Habitat Features	Gradient %	Sample Effort	Sample Results
1222	57.687302	-135.050129	Culvert. Set one minnow trap ~50ft away along the shore. 48in CMP, perched at outlet 2 feet. Drains ditch from road. No upstream fish habitat. Ditch continues along roadside at ten percent grade then goes up hillside. Stream currently dry even with significant rainfall. Recent work by forest service to channelize stream and fix washed out road.						2 DV 3 CT
1417	57.690028	-135.056950	Just downstream from beaver dam, dam is about 1 ft tall, should be passable for juvenile fish.		Small Gravel Fine Organic	Beaver Pond	0-1	EF	2 CO 3 CT
1419	57.688827	-135.051663	No channel						
1420	57.691170	-135.056334	2ft Smooth wall plastic pipe, 1ft perch and due to high velocity stream travels 3ft in the air until entering jump pool. Culvert is bent inside and is no longer straight.	6-8	Small Gravel Large Gravel		4-6	EF	No Fish
1421	57.690822	-135.056726	Significant amounts of bedload from last large storm	8-10	Small Gravel		4-6	EF	No Fish

Table 2.–Continued.

Waypoint	Latitude	Longitude	Notes	Stream Width ft	Stream Substrate	Habitat Features	Gradient %	Sample Effort	Sample Results
1422	57.690649	-135.057428	4-5 ft tall waterfall caused by roots, jump pool less than 6 inches. Barrier to fish at current state. No fish in jump pool. Channel maybe new and shifted from big storm	6-8	Small Gravel		4-6	EF	No Fish
1423	57.691882	-135.056891	Abandoned channel from 2020 storm						
1424	57.695256	-135.062509	No stream						
1425	57.694933	-135.066246	Log bridge on main stem						
1426	57.692415	-135.068224	24 inch CMP, above fish habitat						
1427	57.690689	-135.070120	No stream or channel, on steep hillside						
1428	57.690261	-135.070791	Small stream flows down the hillside, crosses road in culvert. Downstream is steep and not fish habitat						
1429	57.699233	-135.068268	Abandoned channel, no signs of recent flow						
1440	57.686444	-135.051862	3 traps set overnight					MT	30 DV 3 CO 22 CT



Figure 1.–Juvenile coho salmon and a cutthroat trout captured at waypoint 1440.



Figure 2.—Channel at waypoint 1425.



Figure 3.—Lake at waypoint 1440.



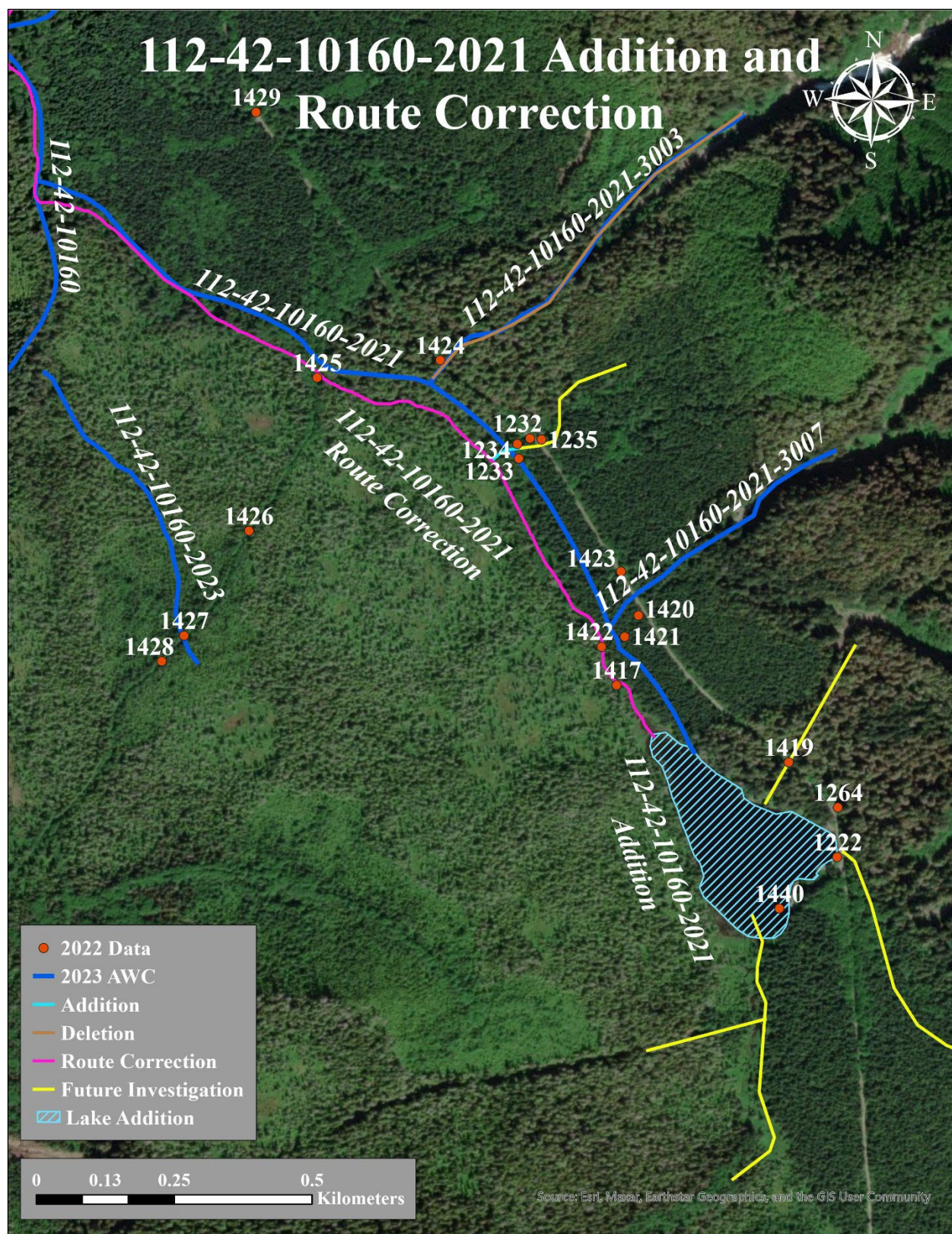


Figure 4.—Stream No. 112-42-10160-2021 addition and route correction map.